

Scaling and correlations in the dynamics of forest-fire occurrence

Álvaro Corral,¹ Luciano Telesca,² and Rosa Lasaponara²

¹*Departament de Física, Facultat de Ciències, Universitat Autònoma de Barcelona, E-08193 Bellaterra, Barcelona, Spain*

²*Istituto di Metodologie per l'Analisi Ambientale, CNR, C. da S. Loja, 85050 Tito (PZ), Italy*

(Received 25 May 2007; revised manuscript received 3 August 2007; published 7 January 2008)

Forest-fire waiting times, defined as the time between successive fires above a certain size in a given region, are obtained for Italy. The probability densities of the waiting times are found to verify a scaling law, despite that fact that the distribution of fire sizes is not a power law. The meaning of such behavior in terms of the possible self-similarity of the process in a nonstationary system is discussed. We find that the scaling law arises as a consequence of the stationarity of fire sizes and the existence of a nontrivial “instantaneous” scaling law, sustained by the correlations of the process; as a consequence, the nonstationary Poisson process model does not account for all the complexity of the structure of fire occurrence.

DOI: [10.1103/PhysRevE.77.016101](https://doi.org/10.1103/PhysRevE.77.016101)

PACS number(s): 89.75.Da, 05.65.+b, 64.60.Ht

I. INTRODUCTION

Recently, many natural hazards, such as earthquakes, volcanic eruptions, landslides, rainfall, solar flares, etc., and other similar-in-spirit phenomena in condensed-matter physics have been shown to be characterized by a power-law distribution of event sizes, over many orders of magnitude in some cases [1–4]. This kind of distribution has profound implications for the nature of these phenomena, as it indicates that extreme events do not constitute a case separated from the smaller, ordinary ones; rather, the events are generated by a mechanism that operates in the same way for all the different scales involved, and a characteristic size of the events cannot be defined. In this way, a reasonable question such as “which is the typical size of the earthquakes in this region?” is impossible to answer.

Comparison with simple self-organized-critical (SOC) cellular-automaton models suggests that the events that define the dynamics in these phenomena consist of a small instability or excitation that propagates as a very rapid chain reaction or avalanche through a medium that is in a very particular state, similar to the critical points found at continuous phase transitions in condensed-matter physics [1,5–7]. The dissipation produced by each avalanche would act as a feedback mechanism that balances a slow energy input and maintains the system close to the critical state.

Of special interest is the case of forest fires, for which cellular-automaton models yielded a power-law behavior for the distributions of burned areas (which are a measure of the size of the events), and showed the previous mechanisms at work [8,9]; curiously, it was not until much later that Malamud *et al.* observed power law distributions for real forest fires, with exponents around 1.4 for the probability density (i.e., noncumulative distribution) of fire sizes [10–12].

Nevertheless, this issue is still open, as other studies with different data do not agree with a simple power-law behavior: Ricotta *et al.* [13] postulated that fires of large sizes, due to negative economic and social effects, are reduced by the massive human intervention; therefore, less than expected large fires occur, leading to an increase (in absolute value) of the power-law exponent in that regime. Reed and McKelvey [14], using the concept of extinguishments growth rate, pre-

sented a four-parameter “competing hazards” model providing the overall best fit. In a subsequent paper, Ricotta *et al.* [15] have observed that a multiple power-law behavior, denoted by the presence of different power-law ranges delimited by cutoffs, is due to dynamical changes, linked to “more or less abrupt changes in the landscape-specific process-pattern interactions that control wildfire propagation, rather than statistical inaccuracies.” Therefore, the appearance of different size ranges with different power-law exponents can be accounted for different dynamics, involving topographic, climatic, vegetational, and human factors [16].

In addition to the size of the events, the dynamics of event occurrence is of fundamental interest. Notably, the temporal properties of some popular SOC cellular-automaton models were shown to be described by a trivial Poisson process, which prevented progress in this aspect until very recently, when it has been concluded that this picture is not appropriate [17]; in parallel, it has been found that real systems show a very rich behavior in time, with power-law distributions for the time between events and/or scaling laws for these distributions [18–20]. The existence of such scaling laws has implications no less deep than the fact of having a power-law distribution of event sizes, although they have been much less studied: (i) the scaling law reflects the fact that the occurrence of large events mimics the process of occurrence of smaller ones (and this behavior is not implicit in the distribution of event sizes), thus allowing one to model the scarce big events on the basis of the abundant small ones; (ii) the scaling law is the signature of the invariance of the process under a renormalization-group transformation, which strengthens the links between natural hazards and critical phenomena [21].

II. FIRE CATALOG AND DISTRIBUTION OF SIZES

We study in this paper the relation between the temporal properties of forest-fire occurrence and the size of the fires, using the AIB (Archivio Incendi Boschivi) fire catalog compiled by the Italian CFS (Corpo Forestale dello Stato) for all Italy [22], covering the years 1998–2002 (included) and containing 36 821 fires. The size s of each fire is measured by the burned area, in hectares ($1 \text{ ha} = 10^4 \text{ m}^2$). Figure 1 shows

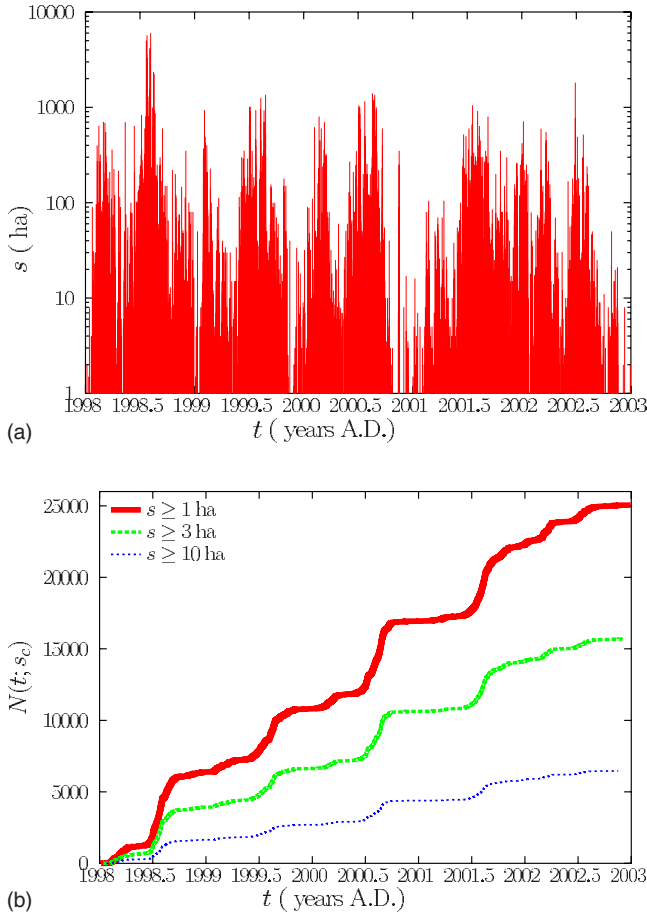


FIG. 1. (Color online) (a) Size of fires in Italy, in hectares, versus time of occurrence t . It can be seen how the largest fires are above 1000 ha burned. (b) Accumulated number $N(t; s_c)$ of fires with size $s \geq s_c$ in Italy as a function of time, for several s_c . Note that $N(t; s_c) = \int_{t_{\text{ini}}}^t r(t; s_c) dt$, with $t_{\text{ini}} = 1998$ and $r(t; s_c) dt$ the number of fires in an interval around t with $s \geq s_c$. Both plots show the nonstationary character of fire occurrence in time.

the size and the accumulated number of fires above a certain size s_c as a function of time; in both cases the nonstationarity of the temporal occurrence is clear.

In order to quantify the overall behavior of fire sizes, we measure for the whole catalog the probability density $D(s)$ of the burned areas, defined as

$$D(s) \equiv \frac{\text{Prob}[s \leq \text{area} < s + ds]}{ds}, \quad (1)$$

where ds is the bin size [small enough to sample almost continuously $D(s)$ but large enough to guarantee statistical significance]; the resulting shape for $D(s)$ is shown in Fig. 2. Although a power law could be fit to the data, it is clearly seen that the log curve is continuously bending downwards, which in a log-log scale is the characteristic of a lognormal distribution

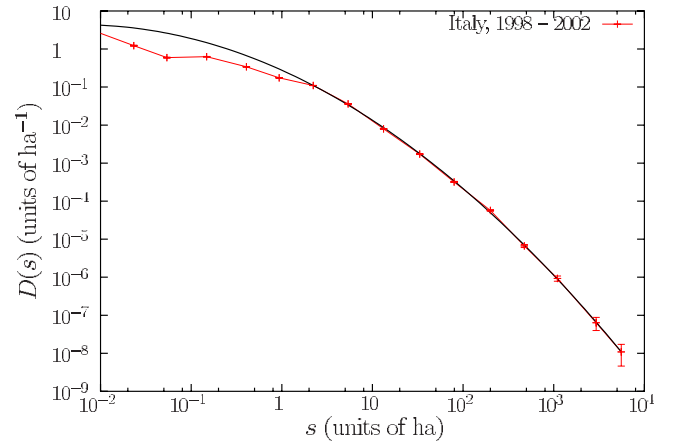


FIG. 2. (Color online) Probability density of fire sizes in Italy, from 1998 to 2002 (included). The error bars are calculated for one standard deviation in the number of counts. The fit is the lognormal distribution whose parameters are given in the text.

$$D(s) = \frac{C}{\sqrt{2\pi}\sigma s} \exp\left(-\frac{(\ln s - \mu)^2}{2\sigma^2}\right) \propto \left(\frac{e^\mu}{s}\right)^{1 + \ln(s/e^\mu)/2\sigma^2}, \quad (2)$$

with μ and σ the mean and standard deviation of $\ln s$, and C a correction to normalization due to the fact that the fit does not extend for all s . In this way, for each $2\sigma^2$ that $\ln s$ is away from μ the exponent of the previous pseudopower law increases in one unit [in other words, each decade s is above e^μ increases the exponent in $\ln 10/(2\sigma^2)$]. When s is measured in hectares, the results of the best fit yield $\mu = -0.35$, $\sigma = 9.5$, and $C = 6.7$; this fit holds not only for the full data but it can be verified that also describes approximately smaller parts of the country and shorter periods of time. Nevertheless, it is convenient to repeat that the lognormal fit is not supposed to be valid for all sizes, but only for a certain range, as the figure shows. In particular, the use of the lognormal distribution has not to be interpreted as implying that the distribution has a maximum. On the other hand, we have no means to conclude if the deviation from a power-law behavior is due to human extinction efforts or to the territorial characteristics of a high-populated country, as it is the case of Italy.

III. SCALING OF WAITING-TIME DISTRIBUTIONS AND SELF-SIMILARITY

From the distribution of sizes, knowing the total number of events in a certain time period, it is possible to calculate the mean waiting time (or recurrence time) for events above a certain size s_c [12]. However, looking at the individual values of the waiting times one sees that they are broadly distributed and therefore the mean values are not very informative about the dynamics of the process. Therefore, in order to investigate the temporal properties of fire occurrence it is necessary to look at the whole waiting-time distribution. To be precise, the procedure is as follows: once a spatial area, a time period, and a minimum event size s_c are se-

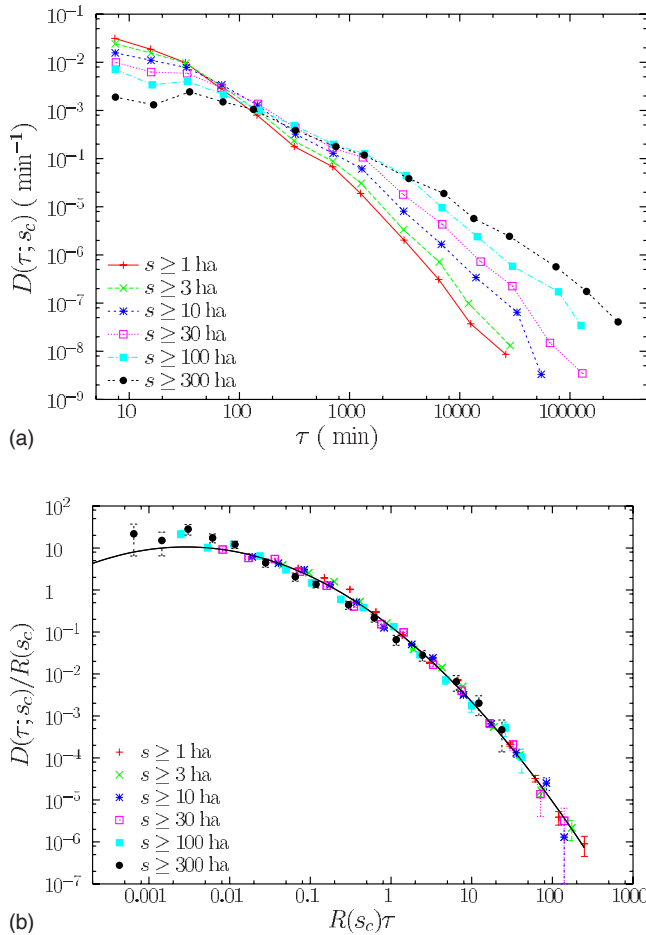


FIG. 3. (Color online) (a) Probability densities of fire waiting times for Italy, from 1998 to 2002 (included) for different minimum burned areas ($s_c=1$ ha to $s_c=300$ ha); waiting times smaller than 5 min are not plotted. The slope of the tail seems to decrease with increasing s_c . (b) The previous densities after rescaling by the mean fire rate, adding error bars (corresponding to one standard deviation). The data collapse indicates the existence of a scaling law (see text) and allows a unified description of the shape of the density, in terms of a lognormal distribution, rather than as a power law. Notice that the rescaling yields dimensionless axes.

lected, the fire history is described as a simple point process $\{t_0, t_1, t_2, \dots\}$, where t_i denotes the time of occurrence of fire i , see the x axis of Fig. 1(a). For this process, the set of waiting times, defined as the time intervals between consecutive events, is obtained straightforwardly as $\tau_i \equiv t_i - t_{i-1}$, for $i=1, 2, \dots$, etc. Important insight into the nature of the process may be achieved by considering s_c not as a constant but as a variable parameter [19,23], and then, the waiting-time probability density for the selected window, defined in the same way as in Eq. (1), will be also considered as a function $D(\tau; s_c)$ of the minimum size s_c .

For the whole country and the total temporal extension of the catalog we obtain the different set of curves displayed in Fig. 3(a). We might fit a (decreasing) power law for each distribution $D(\tau; s_c) \propto 1/\tau^\alpha$, but the exponent α would decrease with the increase of the minimum size s_c . Instead, it is more convenient to rescale the distributions in order that all

of them have the same mean and can be properly compared; this is accomplished by the scale transformation $\tau \rightarrow R(s_c)\tau$ and $D(\tau; s_c) \rightarrow D(\tau; s_c)/R(s_c)$, where $R(s_c)$ is the rate of fire occurrence, defined as the mean number of fires per unit time with $s \geq s_c$ (that is, the inverse of the mean of each waiting-time distribution). Notice that the rescaled axes turn out to be dimensionless. As mentioned above, the mean waiting time, and therefore the rate, can be obtained from the fire-size distribution; this is done as $R(s_c) = R(0) \int_{s_c}^{\infty} D(s) ds$, where $R(0)$ accounts for the fires whose size is $s \geq 0$, i.e., all fires. The results of the rescaling, as shown in Fig. 3(b), lead to a reasonable collapse of the rescaled distributions into a single function F (the scaling function), signaling the approximate fulfillment of a scaling law

$$D(\tau; s_c) = R(s_c)F(R(s_c)\tau), \quad (3)$$

in the same way as for several natural hazards [19,20,24] and other avalanchelike processes [25,26]. Note that one might think that it does not make sense to study waiting times over large spatial regions, as the pooled output of many independent process tends to a Poisson process [27]; however, in the case of earthquakes a global, worldwide perspective has proven very robust to provide consistent nontrivial results, clearly different from a Poisson process [19], and allowing an interesting estimation of the ratio between triggering and triggered events [28,29]. We will show here that in the case of forest fires the scaling law has also a nontrivial origin.

The rescaled plot unveils more clearly the behavior of the distributions: instead of different power laws, what we have is a unique shape, but at different scales. Again, the apparent continuous decrease of the exponent with the rescaled time $\theta \equiv R(s_c)\tau$, suggests a lognormal shape for $F(\theta)$ as that of Eq. (2), where now we will use tildes to denote the parameters. The best fit yields $\tilde{\mu} = -2.0$ and $\tilde{\sigma} = 2.0$, fixing $\tilde{C} \equiv 1$. Notice that now we have the constraint that the mean of the rescaled distribution $\bar{\theta}$ has to be one [$\bar{\theta} = R(s_c)\bar{\tau} \equiv 1$]; as $\bar{\theta} = e^{\mu + \sigma^2/2}$ for a lognormal, this leads to $\mu = -\sigma^2/2$.

It is remarkable that, unlike earthquakes, solar flares, or fractures [19,20,26,30], forest fires fulfill a scaling law for the waiting-time distributions without displaying power-law distribution of event sizes. We could conclude that we have self-similarity in size-time without having scale invariance in size alone. This self-similarity means that for the linear scale transformation $\tau \rightarrow a\tau$ and $s_c \rightarrow bs_c$, the value of b which guarantees scale invariance is given by $R(bs_c)a = R(s_c)$, which means that b does not only depend on a , as in the case of a power-law distribution of sizes, but it also depends on s_c [31]. This would be equivalent to define an artificial new size variable enforcing that it be power law distributed. However, although this picture describes a kind of self-similarity, it is not a sufficient condition. Indeed, the seasonality of fire occurrence prevents self-similarity in size-time: five years of fire occurrence cannot be equivalent to one year of smaller fires, as there is a clear annual modulation in fire occurrence; nevertheless, for a fixed time window still the small events are a model for the occurrence of the big ones.

IV. ORIGIN OF THE SCALING LAW

Why does the scaling law (3) for the waiting-time distributions appear? It is possible to relate it with the stationarity of fire sizes and with the existence of a scaling law for the “instantaneous” waiting-time distributions. Indeed, $D(\tau; s_c)$ is a statistical mixture of those instantaneous waiting-time distributions $D_t(\tau; s_c)$, which, when the scale of variations of the rate is much larger than the corresponding mean waiting time, take into account that fire occurrence is not stationary but change with time t ; i.e., at each time we have a different instantaneous waiting-time distribution $D_t(\tau; s_c)$. If it is only the instantaneous rate $r(t; s_c)$ (defined as the number of fires per unit time in a small time interval around t) what determines fire occurrence, we can write $D_t(\tau; s_c) = D(\tau; s_c | r(t; s_c))$ and then

$$D(\tau; s_c) = \frac{1}{R(s_c)} \int_{r_{\min}}^{r_{\max}} r D(\tau; s_c | r) \rho(r; s_c) dr,$$

where $\rho(r; s_c)$ is the density of rates, i.e., the fraction of the time the rate is in a particular small range of values, divided by that range [32]. Assuming the stationary nature of fire sizes, which means that $D(s)$ does not change with t (notice that this is not incompatible with the nonstationarity of time occurrence), this implies that $r(t; s_c) = p r(t; s_0)$, where the fraction p is the probability of having a fire larger than s_c knowing that it has been larger than s_0 , $p = \text{Prob}[s \geq s_c] / \text{Prob}[s \geq s_0]$; therefore, the density of rates fulfills a scaling law $\rho(r; s_c) = p^{-1} \rho(p^{-1} r; s_0) \equiv p^{-1} g(p^{-1} r)$, with a scaling function g . Finally, with the hypothesis that $D(\tau; s_c | r)$ verifies as well a (instantaneous) scaling law $D(\tau; s_c | r) = r f(r\tau)$, which means that the instantaneous distributions keep the same shape for different s_c , given by the scaling function f , we get

$$D(\tau; s_c) = \frac{1}{p R_0} \int_{pa}^{pb} r f(r\tau) p^{-1} g(p^{-1} r) dr,$$

with $r_{\min} = pa$, $r_{\max} = pb$, and $R(s_c) = p R(s_0) \equiv p R_0$. A simple change of variables reveals that $D(\tau; s_c)$ is a function of the form $p \tilde{F}(p\tau) \equiv p \int_a^b x^2 f(p\tau x) g(x) dx$, which is equivalent to the scaling law (3). In other words, if fire occurrence under hypothetical stationary conditions verifies a scaling law for the waiting times (which in this case would be a reflection of the self-similarity of the stationary process, as explained above), nonstationary conditions keep that scaling valid (with a different scaling function) as long as fire size remains stationary and the rate does not become too small for this description to be invalid. [On the other hand, for rates so small that the mean waiting time is much larger than the larger scale of variation of the rate itself (whose existence is not known for fire occurrence), the structure of $r(t; s_c \rightarrow \infty)$ would become irrelevant and the waiting-time distribution would tend to the exponential form characteristic of Poisson processes.]

In order to support our argument for the existence of the scaling law (3) we show in Fig. 4 the stationarity of fire sizes for small to medium fires, by means of the evolution of $r(t; s_c)$ for different s_c , and how the different curves collapse

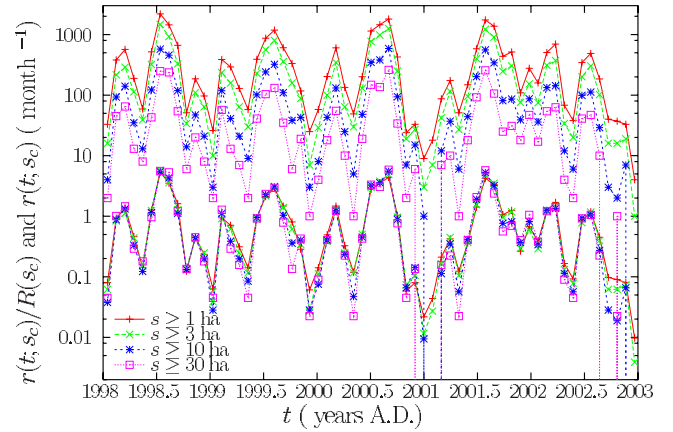


FIG. 4. (Color online) Monthly rates of forest-fire occurrence in Italy as a function of time, for events larger or equal than s_c , with s_c ranging from 1 ha to 30 ha (top curves). In addition, the rescaling of the rate by their mean $R(s_c)$ is shown (bottom collapse of curves, dimensionless), indicating the nearly stationarity of fire sizes (for the small to intermediate sizes analyzed) as well as the nonstationary occurrence in time.

when they are rescaled by their mean $R(s_c)$; an alternative observational proof could be obtained by collapsing the cumulative curves of Fig. 1(b). It is also easy to check that the distribution of rates verifies a scaling law. The other hypothesis, the scaling of $D(\tau; s_c | r)$ is more difficult to demonstrate due to the daily oscillations of $r(t; s_c)$, which makes that the rate can be considered approximately constant only for a few hours, corresponding to those of the daily maximum and minimum hazard (between 1 and 4 p.m. and between 1 and 9 a.m., respectively). This short range of variation leads to very low statistics; nevertheless, for the periods of the year of maximum fire occurrence (for about one month in the summer) the maximum and minimum daily rates are fairly constant for different days, which allows one to improve the statistics. The results obtained in this way are shown in Fig. 5, although they are not conclusive. Essentially, they are compatible with an instantaneous scaling law, with perhaps an exponential instantaneous distribution $D(\tau; s_c | r) \approx r e^{-r\tau}$, but the statistical errors are large; in any case, the hypothesis of the instantaneous scaling law cannot be rejected.

V. INADEQUACY OF THE NONSTATIONARY POISSON PROCESS AND CORRELATIONS

If we do not reject an exponential form for the instantaneous distributions, does this mean that the dynamics can be described by a nonstationary Poisson process? This is the simplest model for nonstationary behavior, for which the events take place at a rate that does not depend on the occurrence of the other events, as in the simple (stationary) Poisson process, but with the difference that the rate changes with time (independently on the process, we can imagine the rate is related to the meteorological conditions, not affected by the presence of fire or not). This leads indeed to exponential instantaneous distributions (provided the rate is not too small), although the reciprocal is not true, in general. If, in

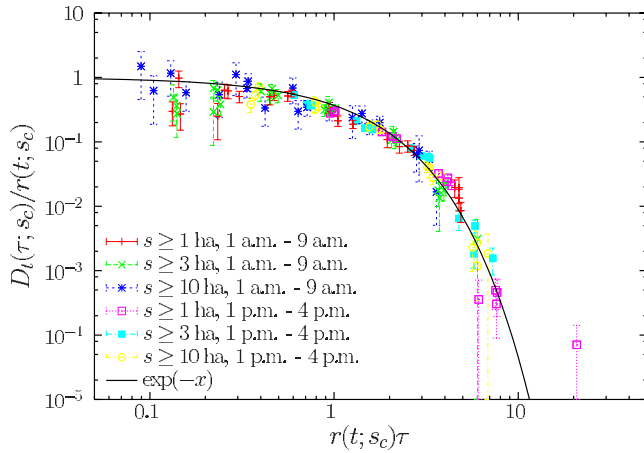


FIG. 5. (Color online) Rescaled distributions of waiting times during annual maximum rate periods, corresponding (in years) to 1998.50-1998.65, 1999.60-1999.66, 2000.56-2000.67, and 2001.54-2001.64 (same symbols) separated for daily minimum rate, 1 a.m.–9 a.m. and maximum, 1 p.m.–4 p.m. Compare these time periods with the steepest increases in Fig. 1(b). Different minimum sizes are used, $s_c=1, 3,$ or 10 ha. The exponential scaling function e^{-x} is shown for comparison. Both axes are obviously dimensionless.

addition, the size of the events constitutes an independent stationary random process, this ensures the existence of a scaling law for the instantaneous distributions, as Poisson processes are invariant under random thinning plus rescaling, see Ref. [21]. We note that the nonstationary Poisson process has been recently used to fit earthquake occurrence, see Ref. [33], although it is clear that the earthquake rate changes as a consequence of earthquake occurrence. In any case, in the remaining we are going to show that important aspects of fire occurrence cannot be described by the nonstationary Poisson process since correlations are relevant in the fire-occurrence dynamics.

A test to verify if a process is of the nonstationary Poisson type was introduced by Bi *et al.* [34]. One only needs to compute for each i the statistics $h_i \equiv 2\tau_{\min i} / (2\tau_{\min i} + \tau_{\text{neigi}})$, where $\tau_{\min i}$ is the minimum of τ_i and τ_{i+1} , and τ_{neigi} is the length of the interval neighbor of the minimum one opposite to the one used in the comparison, i.e., $\tau_{\text{neigi}} = \tau_{i-1}$ if the minimum is τ_i and $\tau_{\text{neigi}} = \tau_{i+2}$ if it is τ_{i+1} . Under the hypothesis we want to test, both τ_{neig} and $2\tau_{\min}$ are independent and exponentially distributed with approximately the same rate $r(t; s_c)$ and therefore it can be shown that h is uniformly distributed between 0 and 1.

The application of the test to the fire data yields catastrophic results, see Fig. 6. The obtained probability density for h is far from uniform, with very large peaks for precise h values. This is due to the discretization of temporal occurrences of fires in the catalog, which are determined verbally and therefore rounded mainly in units of 10 or 15 min; this favors particular values of τ and therefore of h ($2/3$ for $\tau_{\min i} = \tau_{\text{neigi}}$, $4/5$ for $\tau_{\min i} = 2\tau_{\text{neigi}}$, $1/2$ for $\tau_{\min i} = \tau_{\text{neigi}}/2$, etc.). We can correct this effect by the addition of a uniform random value between -5 min and 5 min to each occurrence time t_i , then the peaks in the distribution of h disappear and

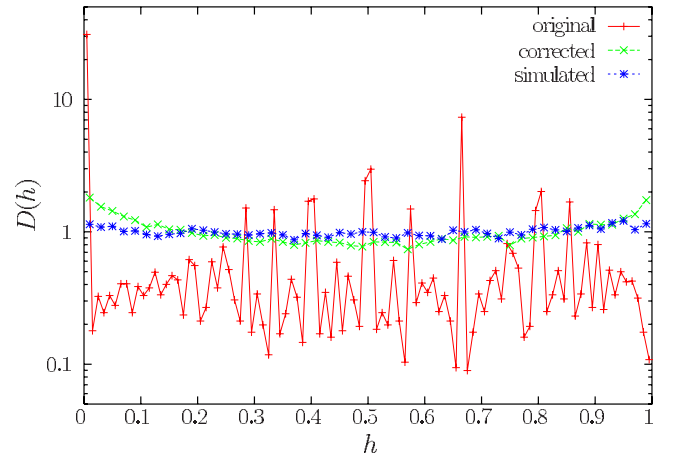


FIG. 6. (Color online) Probability densities of the statistics h , for the original catalog with $s \geq 1$ ha, for the smoothed catalog (labeled as corrected), and for a simulation of a nonstationary Poisson process with the same rate as the real process to which a discretization and the same smoothing procedure have been applied.

its shape gets closer to a uniform one; however, the difference is still significant. We have verified that the difference is not due to the random addition we have performed: simulation of a nonstationary Poisson process where the occurrences are rounded in intervals of 10 min yields a nearly perfect uniform distribution when this discretization is corrected by the uniform random addition just explained (Fig. 6). In consequence, this model does not seem suitable for fire occurrence, and although the instantaneous distributions are close to exponential (Fig. 5), this is not a sufficient condition to have a nonstationary Poisson process, as the absence of correlations is equally important for it.

If we reject the nonstationary Poisson process with independent sizes as a model of fire occurrence, the only way to get a scaling law for the instantaneous process is by means of orchestrated correlations between sizes and occurrence times [21]. In order to establish the existence of such correlations we proceed to study conditional size distributions, defined as in Eq. (1) but with an additional condition for the computation of the probability. We consider first $D(s | s_{\text{pre}} \geq s'_c)$, which accounts for the size of the events for which the size of the immediate previous-in-time event s_{pre} is above a given threshold s'_c . The results in Fig. 7(a) show that an increase of s'_c triggers a greater proportion of large fires, i.e., large fires are followed by large fires. The dependence of a fire size on the previous size is small but significant, unlike to what happens for earthquakes, where correlations between their magnitudes have not been detected [35,36] (nevertheless, for an alternative view see Refs. [37,38]). On the other hand, the dependence of waiting times on the size of the event defining the starting of the waiting period can be measured by $D(\tau; s_c | s_{\text{pre}} \geq s'_c)$ and is displayed in Fig. 7(b), showing how large fires cause a decrease in the number of long waiting times after them, i.e., those fires tend to be closer in time to the next fires. The effect is again small, but clearly detectable, and in this case has a counterpart for earthquakes, where the Omori law for aftershocks implies the same be-

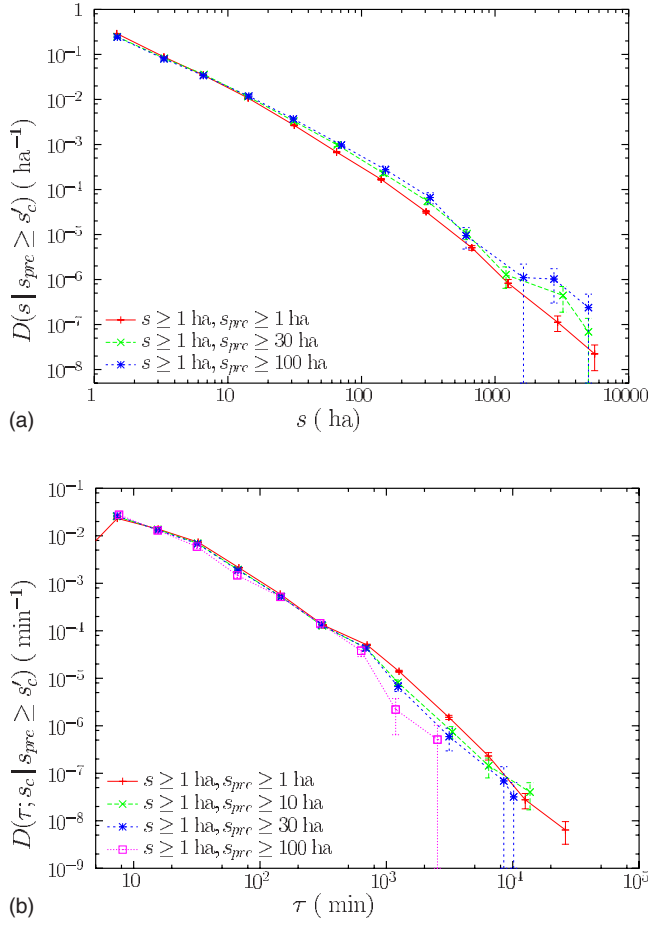


FIG. 7. (Color online) (a) Conditional probability densities of fire sizes in Italy when the previous fire has size s_{pre} larger than (or equal to) s'_c , for $s_c = 1, 30$, and 100 ha. Only fires greater than 1 ha have been taken into account. The case $s_{pre} \geq 1$ ha is essentially the unconditioned distribution shown in Fig. 2. The type of change of the conditional distributions with respect to the unconditioned case is an indication of positive correlations between fire sizes. (b) Conditional probability densities of waiting times when the size of the fire initiating the waiting period s_{pre} is larger than several values of s'_c , for $s \geq 1$ ha, as above. Again, $s_{pre} \geq 1$ corresponds to the unconditioned case, this time shown in Fig. 3(a). The change in the distributions shows the negative correlations between the initiating size and the waiting time.

havior. Summarizing, we find that a large fire causes the waiting time up to the next fire to be small, and the size of this fire to be large as well, on average.

But the correlations between fires are not only with the previous event; its range can be quantified by means of the following autocorrelation function:

$$c(j; s_c) \equiv \langle [\ln s_i - \bar{l}(s_c)] [\ln s_{i+j} - \bar{l}(s_c)] \rangle \sigma_l(s_c)^{-2},$$

where $\bar{l}(s_c)$ is the arithmetic mean of the logarithm of the size for sizes above s_c , $\bar{l}(s_c) \equiv \langle \ln s \rangle$ for $s \geq s_c$ (i.e., the logarithm of the geometric mean of the size), and $\sigma_l(s_c)$ is the standard deviation of the logarithm $\sigma_l^2(s_c) \equiv \langle [\ln s - \bar{l}(s_c)]^2 \rangle$. Notice

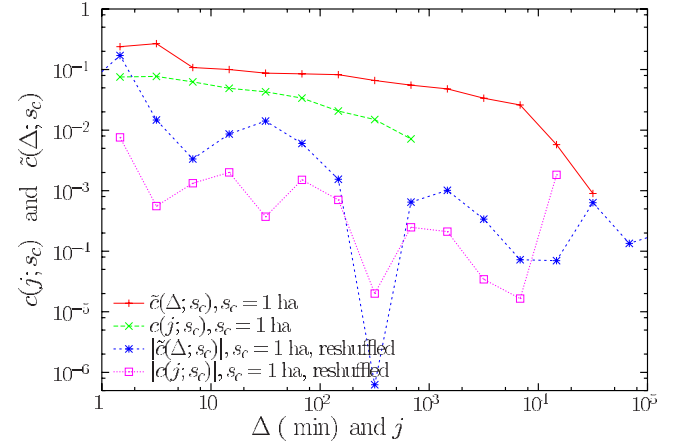


FIG. 8. (Color online) Autocorrelation functions for the Italian catalog and for a version with reshuffled sizes. In the latter case it is the modulus of the autocorrelation what is shown, as the function fluctuates around zero and it is equally likely that it is positive or negative. Notice that both j and the correlation functions are dimensionless, although the size is measured in hectares.

that although the process is not stationary, the stationarity of the size gives sense to the autocorrelation function defined in this way. The results for this function are shown in Fig. 8, and compared with the same correlation function calculated for a reshuffled version of the catalog, for which the size of the events are randomly permuted, breaking the correlations between them (which should yield an autocorrelation function fluctuating around zero). The conclusion is that positive correlations extend significantly beyond several hundreds of events (for events of size larger than 1 ha).

The behavior of the autocorrelation as a function of time is still more clear than as a function of fire number; as the process is not stationary in time both functions are not equivalent. We define

$$\tilde{c}(\Delta; s_c) \equiv \langle [\ln s(t) - \bar{l}(s_c)] [\ln s(t + \Delta) - \bar{l}(s_c)] \rangle \sigma_l(s_c)^{-2},$$

where $s(t)$ denotes the size of the fire that happens at time t (we slightly change notation, for convenience). The average is taken over all times t and $t + \Delta$ for which there are fires, this yields the results of Fig. 8. The correlation is again positive, but larger in this case, suggesting that real time is a better variable to describe the evolution of correlations, which extend for about $10\,000$ min, i.e., roughly 1 week. It is likely that these correlations are mediated through the meteorological conditions.

VI. CONCLUSION

In summary, the dynamics of forest-fire occurrence shows a complex scale-invariant structure at any time, modulated by seasonal and daily variations and orchestrated by means of broad-range correlations.

ACKNOWLEDGMENT

A.C. thanks the Ramon y Cajal Foundation for support.

- [1] P. Bak, *How Nature Works, The Science of Self-Organized Criticality* (Copernicus, New York 1996).
- [2] D. L. Turcotte, *Fractals and Chaos in Geology and Geophysics*, 2nd ed. (Cambridge University Press, Cambridge, 1997).
- [3] B. D. Malamud, *Phys. World* **17** (8), 31 (2004).
- [4] J. P. Sethna, K. A. Dahmen, and C. R. Myers, *Nature* (London) **418**, 242 (2001).
- [5] D. L. Turcotte, *Rep. Prog. Phys.* **62**, 1377 (1999).
- [6] D. Sornette, *Critical Phenomena in Natural Sciences*, 2nd ed. (Springer, Berlin, 2004).
- [7] S. Hergarten, *Self-Organized Criticality in Earth Systems* (Springer, Berlin, 2002).
- [8] P. Bak, K. Chen, and C. Tang, *Phys. Lett. A* **147**, 297 (1990).
- [9] B. Drossel and F. Schwabl, *Phys. Rev. Lett.* **69**, 1629 (1992).
- [10] B. D. Malamud, G. Morein, and D. L. Turcotte, *Science* **281**, 1840 (1998).
- [11] D. L. Turcotte and B. D. Malamud, *Physica A* **340**, 580 (2004).
- [12] B. D. Malamud, J. D. A. Millington, and G. L. W. Perry, *Proc. Natl. Acad. Sci. U.S.A.* **102**, 4694 (2005).
- [13] C. Ricotta, G. Avena, and M. Marchetti, *Ecol. Modell.* **119**, 73 (1999).
- [14] W. J. Reed and K. S. McKelvey, *Ecol. Modell.* **150**, 239 (2002).
- [15] C. Ricotta *et al.*, *Ecol. Modell.* **141**, 307 (2001).
- [16] L. Telesca, G. Amatulli, R. Lasaponara, M. Lovallo, and A. Santulli, *Ecol. Modell.* **185**, 531 (2005).
- [17] M. Paczuski, S. Boettcher, and M. Baiesi, *Phys. Rev. Lett.* **95**, 181102 (2005).
- [18] G. Boffetta, V. Carbone, P. Giuliani, P. Veltri, and A. Vulpiani, *Phys. Rev. Lett.* **83**, 4662 (1999).
- [19] A. Corral, *Phys. Rev. Lett.* **92**, 108501 (2004).
- [20] M. Baiesi, M. Paczuski, and A. L. Stella, *Phys. Rev. Lett.* **96**, 051103 (2006).
- [21] A. Corral, *Phys. Rev. Lett.* **95**, 028501 (2005).
- [22] <http://www.corpoforestale.it>
- [23] P. Bak, K. Christensen, L. Danon, and T. Scanlon, *Phys. Rev. Lett.* **88**, 178501 (2002).
- [24] A. Bunde, J. F. Eichner, J. W. Kantelhardt, and S. Havlin, *Phys. Rev. Lett.* **94**, 048701 (2005).
- [25] K. Yamasaki, L. Muchnik, S. Havlin, A. Bunde, and H. E. Stanley, *Proc. Natl. Acad. Sci. U.S.A.* **102**, 9424 (2005).
- [26] J. Davidsen, S. Stanchits, and G. Dresen, *Phys. Rev. Lett.* **98**, 125502 (2007).
- [27] D. R. Cox and P. A. W. Lewis, *The Statistical Analysis of Series of Events* (Methuen, London, 1966).
- [28] G. Molchan, *PAGEOPH* **162**, 1135 (2005).
- [29] S. Hainzl, F. Scherbaum, and C. Beauval, *Bull. Seismol. Soc. Am.* **96**, 313 (2006).
- [30] J. Åström *et al.*, *Phys. Lett. A* **356**, 262 (2006).
- [31] For a power-law distribution $D(s) \propto 1/s^{1+\beta}$ and $R(s_c) \propto 1/s_c^\beta$, therefore, $a=b^\beta$.
- [32] A. Corral and K. Christensen, *Phys. Rev. Lett.* **96**, 109801 (2006).
- [33] R. Shcherbakov, G. Yakovlev, D. L. Turcotte, and J. B. Rundle, *Phys. Rev. Lett.* **95**, 218501 (2005).
- [34] H. Bi, G. Börner, and Y. Chu, *Astron. Astrophys.* **218**, 19 (1989).
- [35] A. Corral, *Phys. Rev. Lett.* **95**, 159801 (2005).
- [36] A. Corral, *Tectonophysics* **424**, 177 (2006).
- [37] E. Lippiello, C. Godano, and L. de Arcangelis, *Phys. Rev. Lett.* **98**, 098501 (2007).
- [38] S. Lennartz, V. N. Livina, A. Bunde, and S. Havlin (unpublished).